

CHILLER WATER AIR HAND UNIT SCHEDULE

UNIT CODE	QTY (BETH)	SEWER FLOOR	SUPPLY FLOOR (INCH)	EXT OF (INCH)	TOTAL RISE (MM)	SEA LEVEL (MM)	AIR		WATER SIDE				FAN	REMARK		
							ENTERED F stop	LEAVING F stop	FEED AIR (MM)	WATER TEMP (C)	FLOW AIR (GPM)	HP				
FAN-51	1	G TO 10TH	18102	125	746	5305	10484	61494	16700	43	82.7	150	20	303050	Y	Δ
FAN-52	1	G TO 10TH	11770	125	623	3750	10434	61504	11770	43	69.4	106	15	303050	Y	Δ
FAN-53	1	G TO 10TH	9320	125	640	2978	10400	61707	9320	43	63.2	81	7	303050	Y	Δ
FAN-54	1	G TO 10TH	14722	125	693	4483	10444	61504	14722	43	71.1	132	18	303050	Y	Δ
FAN-301	1	10th-30th	16000	125	780	5257	10494	64504	16000	43	82.8	144	20	303050	Y	Δ
FAN-302	1	10th-30th	11200	125	638	3684	10484	61242	11200	43	63	100	10	303050	Y	Δ
AHM-1	1	5th	5500	0.00	1272	1120	76104	27136	300	40	55	25.6	5	303050	D	Δ
AHM-2	1	5th	6300	0.00	1454	1536	77600	85247	350	40	55	30	5	303050	D	Δ
AHM-3	1	5th	6500	0.00	1040	1565	87014	33734	300	40	55	111	10	303050	Y	Δ
AHQ-1	1	GROUND	12750	0.76	2064	2303	76164	86104	1000	40	65	704	7.5	303050	Y	Δ
AHQ-2	1	GROUND	10300	0.90	3519	262	76164	86104	400	40	65	884	10	303050	Y	Δ
AHQ-3	1	GROUND	11600	0.76	3010	2312	74494	86104	1100	40	65	740	10	303050	Y	Δ
AHQ-4	1	2nd	14600	0.76	1896	2978	76164	86104	1300	40	65	880	10	303050	Y	Δ
AHQ-5	1	GROUND	10600	0.76	3010	2312	76164	86104	800	40	65	740	10	303050	Y	Δ
AHQ-24	1	2nd	14600	0.76	1893	2662	76164	86104	1200	40	65	745	10	303050	Y	Δ
AHQ-361-1	1	3rd-B-6th	12000	0.76	3078	2700	76164	86104	1100	40	65	724	7.5	303050	Y	Δ
AHQ-362-2	2	3rd-B-6th	4200	0.76	1423	942	77600	86104	400	40	65	351	3	303050	Y	Δ
AHQ-363-3	2	3rd-B-6th	5070	0.76	1710	1150	76164	86104	400	40	65	413	3	303050	Y	Δ
AHQ-364-4	2	3rd-B-6th	11200	0.76	3378	2407	77600	86104	950	40	65	680	10	303050	Y	Δ
AHQ-51	2	5th	10200	0.76	3876	2700	76164	86104	1100	40	65	724	7.5	303050	Y	Δ
AHQ-52	1	5th	4770	0.90	1542	1014	77600	86104	400	40	65	428	3	303050	Y	Δ
AHQ-53	1	5th	5500	0.76	1170	1150	76164	86104	400	40	65	410	3	303050	Y	Δ
AHQ-54	1	5th	11400	0.76	3378	2407	77600	86104	950	40	65	680	7.5	303050	Y	Δ
AHQ-54	1	10th	11500	0.76	1120	1120	76164	86104	400	40	65	1040	10	303050	Y	Δ
AHQ-67015-1	1	6th-10th	7600	0.76	3876	2700	76164	86104	1100	40	65	724	7.5	303050	Y	Δ
AHQ-67015-2	1	6th-10th	10200	0.76	2265	1462	76164	86104	950	40	65	966	5	303050	Y	Δ
AHQ-67016-3	10	6th-10th	11200	0.76	2											
AHQ-67016-4	10	6th-10th	11400	0.76	3378	2407	77600	86104	950	40	65	679	7.5	303050	Y	Δ
AHQ-153	10	10th	12600	0.76	3488	2053	744934	84754	800	40	65	567	7.5	303050	Y	Δ
AHQ-154	1	10th	14800	0.76	4017	3098	744938	84856	950	40	65	725	10	303050	Y	Δ
AHQ-187020-1	15	10th-20th	7200	0.76	2875	2700	76164	86154	1100	40	65	724	7.5	303050	Y	Δ
AHQ-187020-2	15	10th-20th	10500	0.90	2265	1400	76164	842537	750	40	65	966	0	303050	Y	Δ
AHQ-1	1	DECK FL	14800	0.76	4017	3098	74494	85753	820	40	55	857	15	303050	Y	Δ
AHQ-2	1	DECK FL	12600	0.76	3875	2700	76164	84581	1100	40	65	724	7.5	303050	Y	Δ
AHQ-3	1	DECK FL	7500	0.76	2295	1400	76164	838653	750	40	62.2	566	0	303050	D	Δ

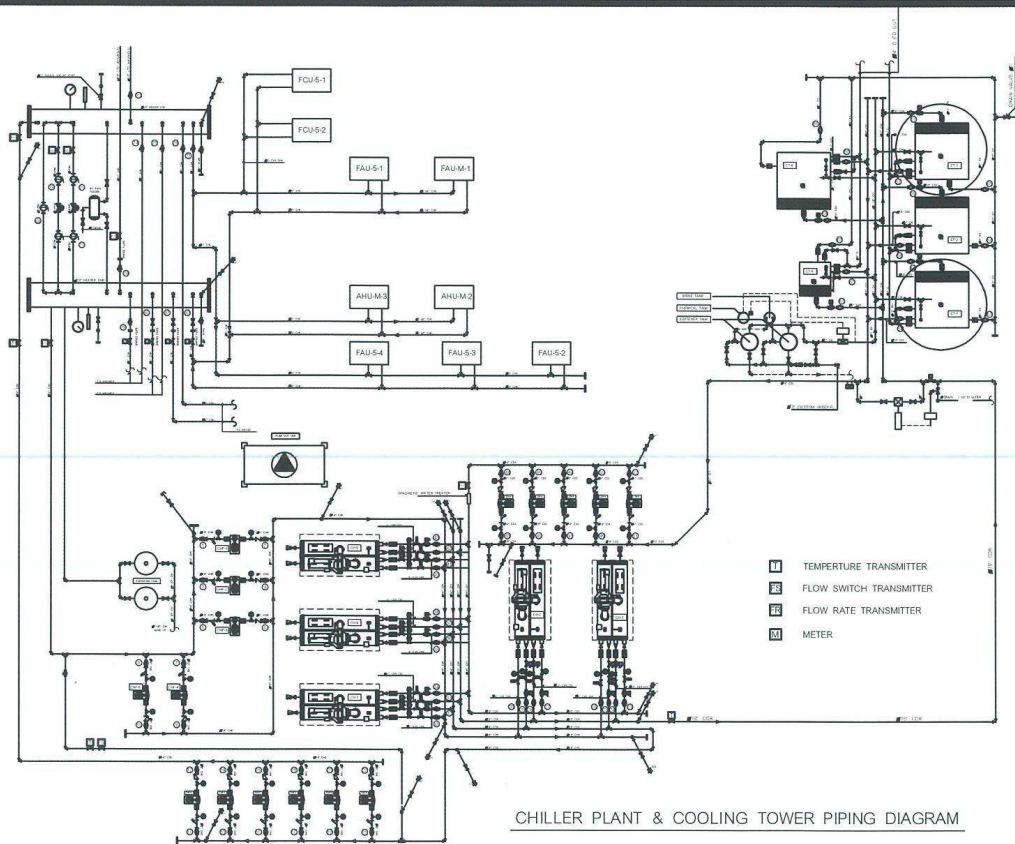
WATER CHILLER SCHEDULE																	
UNIT CODE	QTY (SET)	COOLING CAPACITY	COOLER SIDE					COND.					PWR		TYPE	REMARK:	
			ENT (F)	ENT (F)	FLOOR RATE (GPM)	P.D (F)	FLOOR FACTOR	ENT (F)	ENT (F)	FLOOR RATE (GPM)	P.D (F)	FLOOR FACTOR					
CH-12.34	4	375	55	45	1,358	30	5,000	90	100	1,775	15.3	5,000	35	380/350		CENTRIFUGAL	1.53kW/2HP
CH-5	1	575	55	45	630	35	3,000	90	100	913	8.3	3,000	32	380/350		SCREWED	1.40kW/1.9HP

COOLING TOWER SCHEDULE											
UNIT CODE	QTY (CELLS)	COOLING CAPACITY (Tn)	WATER FLOW RATE (GPM)	ENT WATER TEMP (F)	LVD WATER TEMP (F)	AMBIENT TEMP (F DB)	POWER INPUT (HP)	POWER SUPPLY (KVA)	STARTER TYPE	TYPE	
CT-12.34	4	570	1710	100	92	82	21.90	380/350	Y	▽	FORCE DRAFT COUNTER FLOW SQUARE TYPE
	1	570	15K	100	90	83	23.30	380/350	Y	▽	FORCE DRAFT COUNTER FLOW SQUARE TYPE

WATER PUMP SCHEDULE											
UNIT CODE	QTY (CELLS)	FLOW RATE (GPM)	TDH (FT WDG)	EFFICIENCY	WORKING PRESSURE (PSI)	HP	MOTOR STARTER	RPM	VOLAGE	PUMP TYPE	REMARK
CHP - 12.3.4	4	1,368	30	75%	150	25	Y - Δ	1,400	380/350	HORIZONTAL SPLIT CASE	1-STANDBY
CHP-5	1	420	30	75%	150	9.9	D D.C.L	1,400	380/350	HORIZONTAL SPLIT CASE	
CHP- 6.7.8.9.10.11	6	800	110	77%	150	42	Y - Δ	1,400	380/350	HORIZONTAL SPLIT CASE	1-STANDBY
CHP - 12.3.4	4	1,770	80	75%	150	32	Y - Δ	1,400	380/350	HORIZONTAL SPLIT CASE	1-STANDBY

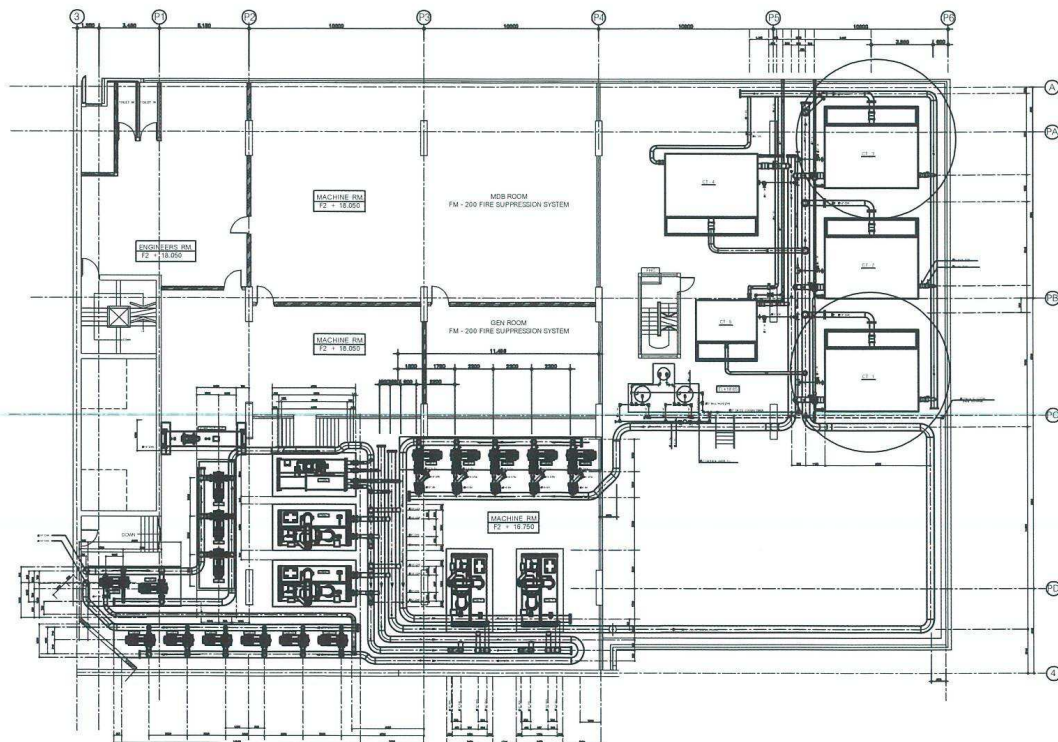
[illegible]

FOR DISCUSSION	Owner	Date :	Project	
FOR EXAMINATION		Scale :	BANGKOK CITY TOWER	
FOR NOTICE	Project manager	✓	Drawing title	Draw No.
FOR APPROVAL	Project manager	✓	EQUIPMENT LIST 1	AC-002
FOR CONSTRUCTION	Project manager	✓		
	Project manager	✓	Checked by :	Revision



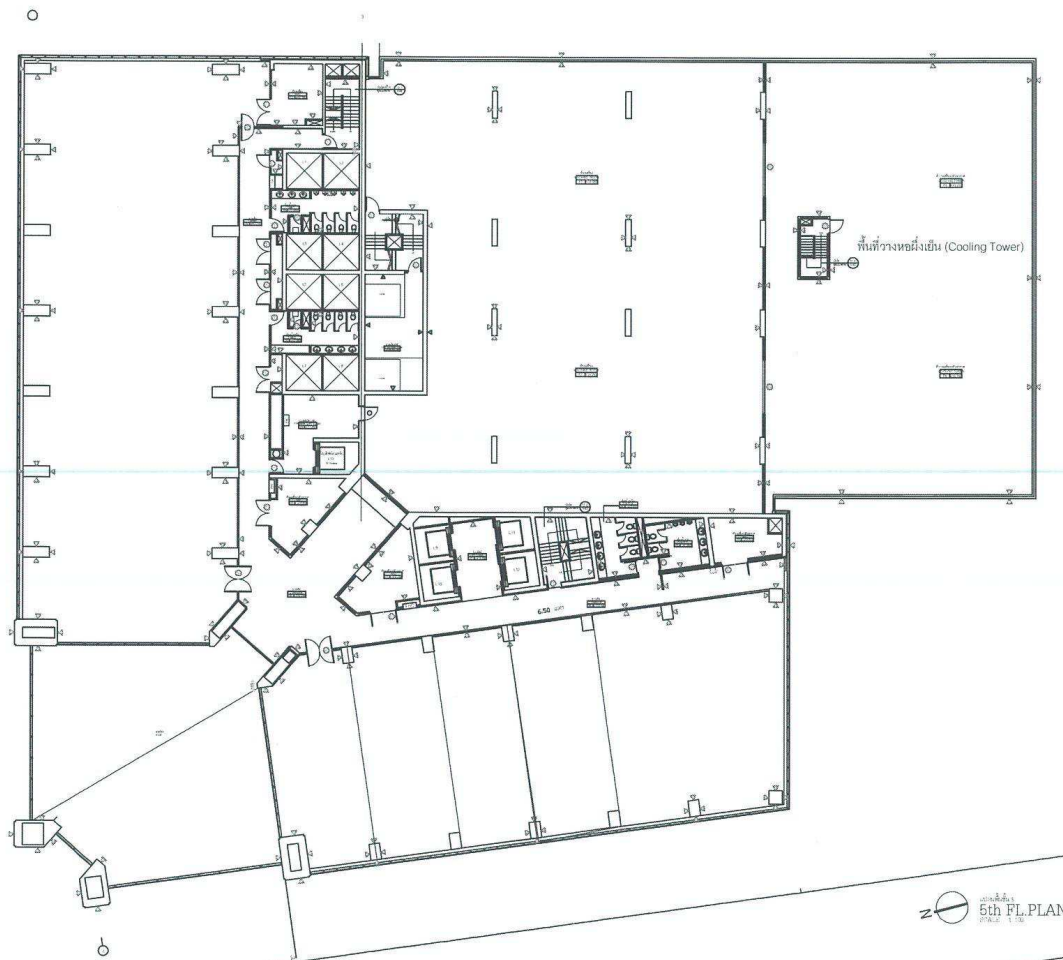
CHILLER PLANT & COOLING TOWER PIPING DIAGRAM

No.	Date	Revisions	Enter	By	Note						
						FOR DISCUSSION	Owner	Date	Project		
						FOR EXTENSION		Scale	BANGKOK CITY TOWER		
						FOR APPROVAL	Project manager	///	Drawing Title		
						FOR APPROVAL	Project manager	///	CHILLER PLANT & COOLING TOWER PIPING DIAGRAM	Drawn No.	
						FOR CONSTRUCTION	Project manager	///	Checked by	AC-004	
						FOR CONSTRUCTION	Project manager	///	Filename		



CHILLER PLANT AND COOLING TOWER FL. PLAN

No.		Date	Revisions	Enter	By	Note	FOR DISCUSSION		Owner	Date	Project	
											BANGKOK CITY TOWER	
							FOR ESTIMATION		Project manager	✓	Drawing Title	
							FOR REFERENCE		Project manager	✓	PIPING CHILLER PLANT & COOLING TOWER FL. PLAN	
							FOR APPROVAL		Project manager	✓	Drawn By :	
							FOR CONSTRUCTION		Project manager	✓	Checked by :	
							PROJECT - 0000000		Project manager	✓	Filename :	
											Drawn No.	
											AC-008	



5th FL. PLAN



ARCHITECT

ENGINEER

MECHANICAL

ELECTRICAL

PLUMBING

PAINTING

ROOFING

LANDSCAPE

INTERIOR DESIGN

EXTERIOR DESIGN

CONSTRUCTION

MAINTENANCE

OPERATION

MANAGEMENT

TRAINING

RESEARCH

DEVELOPMENT

INNOVATION

CREATIVITY

IMAGINATION

INSPIRATION

IDEATION

PROTOTYPING